

Printing from the Laptop

Printing from the Library Loan Laptops is achieved through the use of QUT Printing Services – Lab Printing.

To enable printing from the laptop, follow these steps:

1. **Connect to the QUT Network**, either via wireless or Laptop Access ports.
(see Page 2)
2. Click **Start -> Run**.



Figure 25 Start menu - Run.

Library Loan Laptop Documentation

3. Type `\\qutprintgp\students` for black & white printing, or `\\qutprintgp\students_col` for colour printing and click OK.

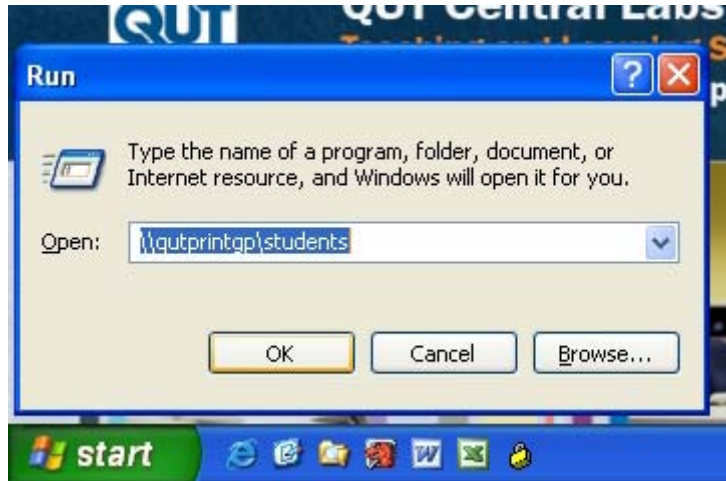


Figure 26 entering print queue

4. Enter `qutad\nXXXXXXXX`, where nXXXXXXXX is your QUT Access username, and your QUT Access password in the "Connect to qutprintgp" window. Click **OK**.



Figure 27 Username and password prompt

5. Click **Yes** on the "Connect to Printer" warning screen.

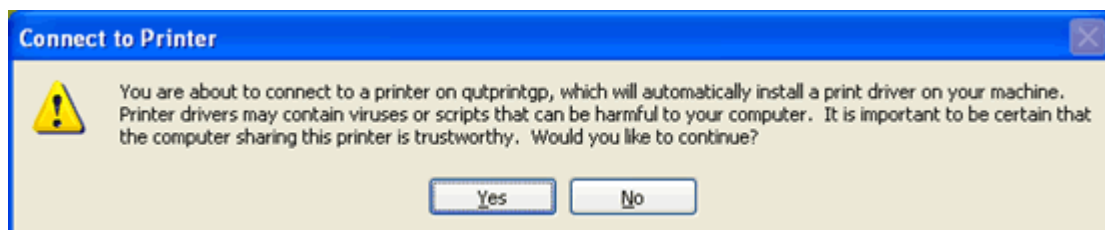


Figure 28 Warning screen

Library Loan Laptop Documentation

6. Select **File -> Print** from within any application and select the printer named `\\qutprintgp\students` for black and white printing . Select `\\qutprintgp\students_col` if you are printing in colour.

